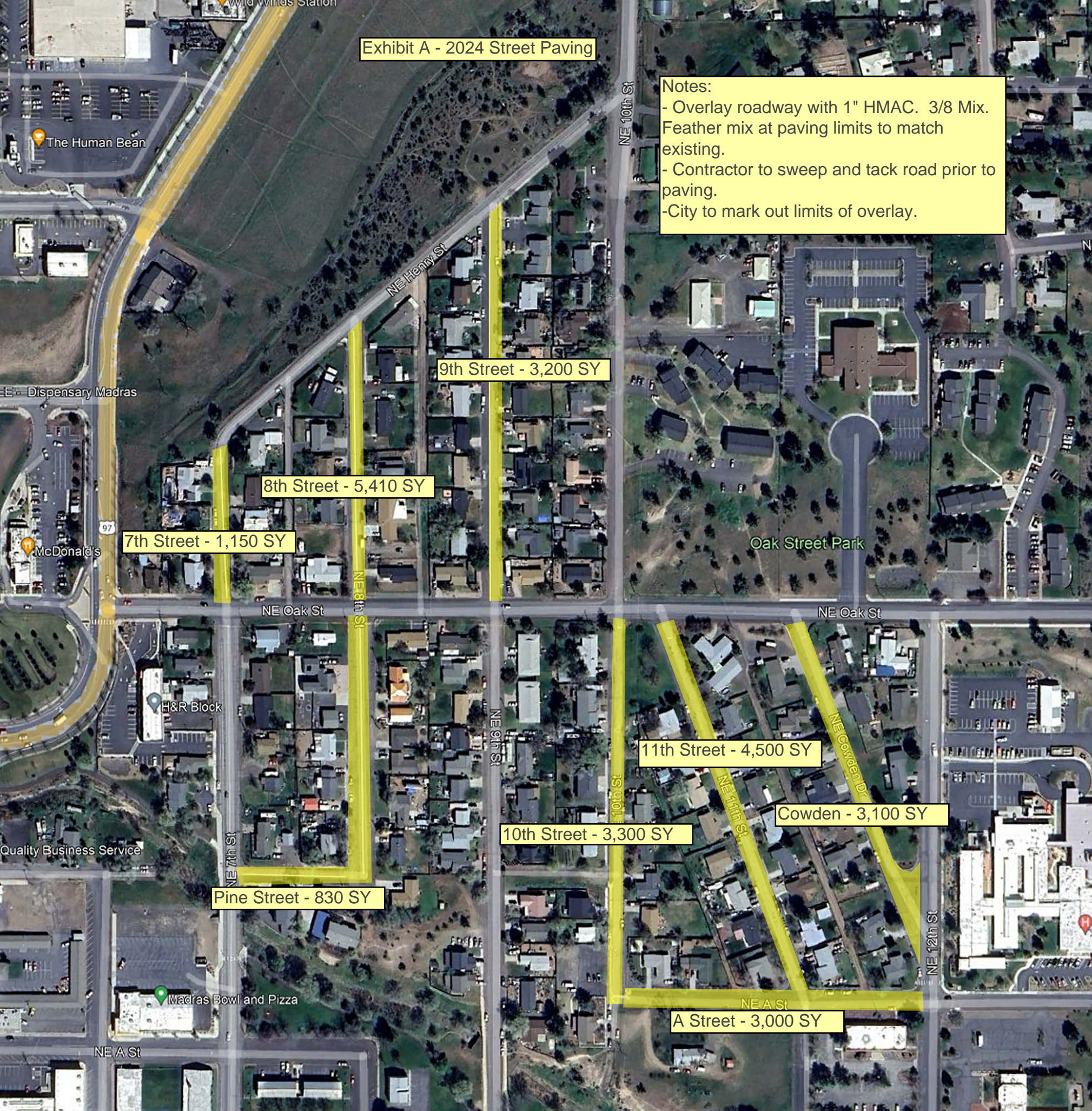


**Exhibit A - 2024 Street Paving**

**Notes:**

- Overlay roadway with 1" HMAC. 3/8 Mix. Feather mix at paving limits to match existing.
- Contractor to sweep and tack road prior to paving.
- City to mark out limits of overlay.



**9th Street - 3,200 SY**

**8th Street - 5,410 SY**

**7th Street - 1,150 SY**

**11th Street - 4,500 SY**

**Cowden - 3,100 SY**

**10th Street - 3,300 SY**

**Pine Street - 830 SY**

**A Street - 3,000 SY**

Wild Wines Station  
The Human Bean  
Dispensary Madras  
McDonald's  
H&R Block  
Quality Business Service  
Madras Bowl and Pizza  
Oak Street Park  
NE Henry St  
NE Oak St  
NE 7th St  
NE 8th St  
NE 9th St  
NE 10th St  
NE 11th St  
NE 12th St  
NE A St  
NE Corbett Dr  
97  
N